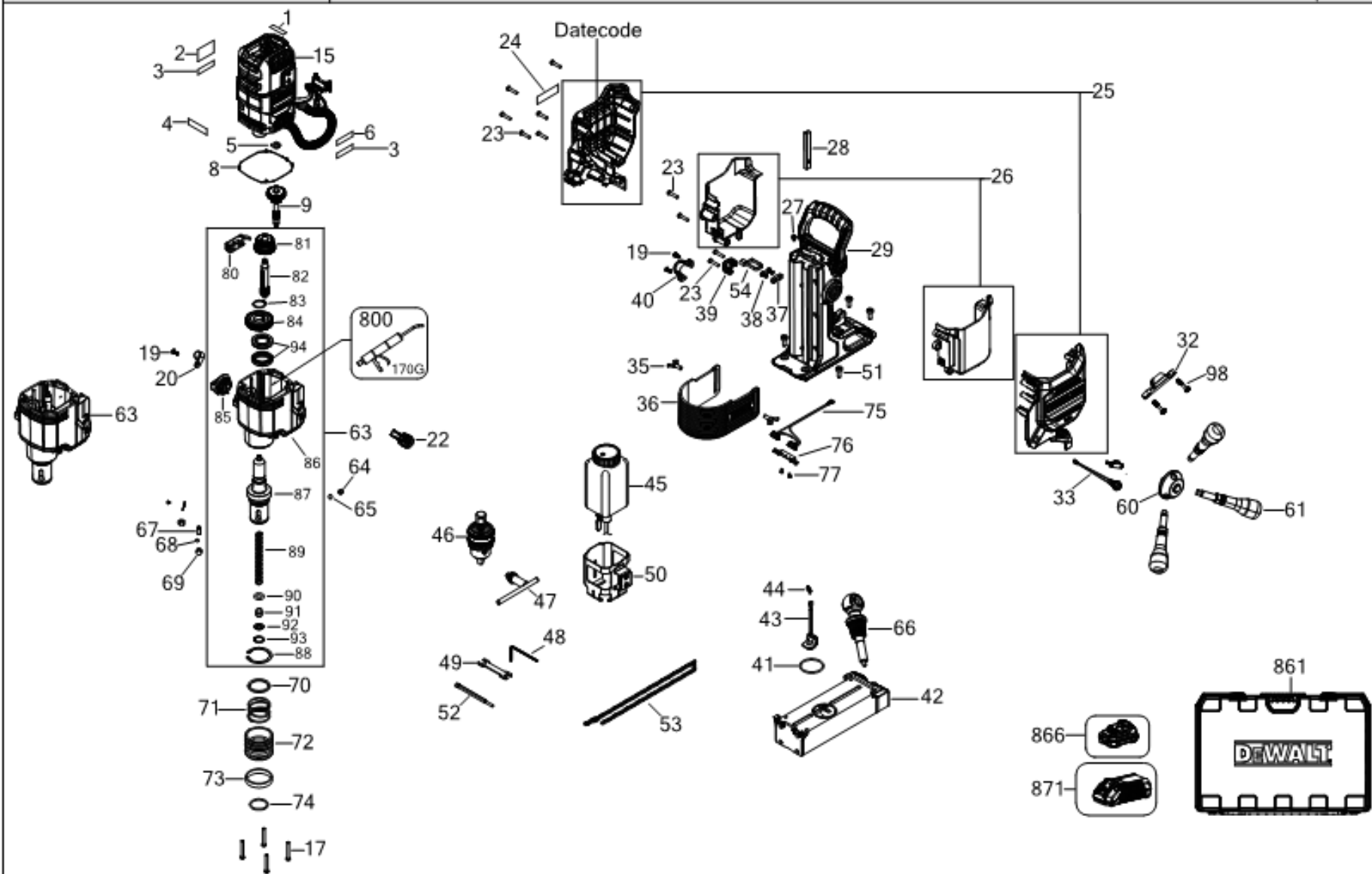




DCD1623

Typ
1



©

E21155

www.2helpU.com

28/10/2022

Parts List DCD1623X2G MAG DRILL PRESS 1

Item	Part Number	Qty	Part Description	General Description	Other Info	Repair Inst	Markets
1	N882937	1	LABEL		PNP	No	QW
2	NA064119	1	RATING PLATE	EURO	EURO	No	QW
3	NA234427	2	LABEL	BRUSHLESS	BRUSHLES	No	QW
4	N882938	1	LABEL		SPEED	No	QW
5	N695498	1	WASHER			No	QW
6	NA234426	1	BRAND LABEL	18V XR	18V XR	No	QW
8	N870868	1	GASKET			No	QW
9	NA283086	1	SHAFT SA			No	QW
15	NA283106	1	MOTOR & SWITCH SA	CAD FREE	CAD FREE	No	QW
17	330019-16	4	SCREW		2.3-2.7Nm	No	QW
19	330019-45	3	SCREW		2.3-2.7Nm	No	QW
20	N695455	1	CORD CLAMP			No	QW
22	NA283134	1	LEVER			No	QW
23	330019-32	10	SCREW		2.3-2.7Nm	No	QW
24	N882940	1	LABEL		WARNING	No	QW
25	NA005973	1	HOUSING	CAD FREE	CAD FREE	No	QW
26	NA004244	1	HOUSING			No	QW
27	N440478	1	SCREW		2-2.4Nm	No	QW
28	N695441	1	BLOCK		DOVETAIL	No	QW
29	NA283169	1	FRAME SA	NA241219 PACKED	LOCK BLOCK	No	QW
32	N787996	1	INSERT		CHIP	No	QW
33	N849579	1	LED			No	QW
35	N695529	2	SCREW			No	QW
36	N695513	1	GUARD			No	QW
37	N506975	1	CORD CLAMP			No	QW
38	330045-49	2	SCREW			No	QW
39	N695571	1	CLAMP			No	QW
40	N873697	1	CORD CLAMP			No	QW
41	651606-00	1	O RING	42.5 x 2.62	42.5 x 2.62	No	QW
42	NA283551	1	BASE SA	NA277997 PACKED		No	QW
43	NA286896	1	MICRO SWITCH	NA241215 PACKED		No	QW
44	330024-00	2	SCREW		1.1-1.3Nm	No	QW

Parts List DCD1623X2G MAG DRILL PRESS 1

Item	Part Number	Qty	Part Description	General Description	Other Info	Repair Inst	Markets
45	N695525	1	BOTTLE			No	QW
46	NA282753	1	CHUCK SA			No	QW
47	N506331	1	CHUCK KEY			No	QW
48	NA155984	1	WRENCH		HEX	No	QW
49	NA163561	1	WRENCH			No	QW
50	NA275845	1	FRAME			No	QW
51	NA117538	4	SCREW		4.5-5.5Nm	No	QW
52	NA136513	1	PIN			No	QW
53	N695515	1	CHAIN		SAFETY	No	QW
54	N408734	1	CABLE TIE			No	QW
60	NA286565	1	WHEELHUB SA	NA241220 PACKED		No	QW
61	N695509	3	HANDLE			No	QW
63	NA286572	1	GEARCASE SA			No	QW
64	N695405	1	DETENT			No	QW
65	N048234	1	BALL STEEL			No	QW
66	NA283560	1	LEVER SA	N736821 PACKED		No	QW
67	N695402	2	SPRING		LEAF	No	QW
68	330024-54	2	SCREW			No	QW
69	N695398	2	DETENT		BALL	No	QW
70	N695408	1	WASHER			No	QW
71	N695407	1	SPRING			No	QW
72	N695406	1	SLEEVE			No	QW
73	N695404	1	BAND			No	QW
74	N883234	1	RING		35MM	No	QW
75	N774924	1	LED LIGHT			No	QW
76	N895103	1	CLAMPING BAR	CLAMP PLATE LED		No	QW
77	330024-00	2	SCREW			No	QW
80	N917625	1	SUPPORT PLATE			No	QW
81	N823489	1	GEAR	2ND STAGE		No	QW
82	NA318265	1	SHAFT SA			No	QW
83	N695432	1	RING	22MM R RING		No	QW
84	N695413	1	GEAR	GEAR 3RD STAGE		No	QW

Parts List DCD1623X2G MAG DRILL PRESS 1

Item	Part Number	Qty	Part Description	General Description	Other Info	Repair Inst	Markets
85	N926446	1	KNOB SA		SPEED	No	QW
86	NA318282	1	GEARCASE SA			No	QW
87	NA318288	1	OUTPUT SHAFT SA			No	QW
88	N538725	1	CIRCLIP			No	QW
89	N695397	1	SPRING			No	QW
90	1005809-00	1	O RING			No	QW
91	N695396	1	SEAL	SEAL CHUCK		No	QW
92	N696760	1	WASHER	WASHER 10MM		No	QW
93	N695394	1	RING	RING 19MM		No	QW
94	N695392	2	SEAL	SEAL RING 25		No	QW
98	N831593	2	SCREW			No	QW
800	283484-01	1	GREASE	32oz, EXXON CVJ	170G	No	QW
861	NA009959	1	KITBOX			No	QW
866	NA214007	2	BATTERY 3 X18V-9.0AH-162WH		DCB547G-X	No	QW
871	N473860	1	CHARGER	DCB118-QW	J DCB118-Q W	No	QW